

# Sustaining health system resilience in extreme circumstances: insights from key informant interviews with UNRWA staff across Gaza and Lebanon during the COVID-19 pandemic

**Giulia Loffreda**

Institute for Global Health and Development, Queen Margaret University, UK



Research for health  
in humanitarian crises

| elrha





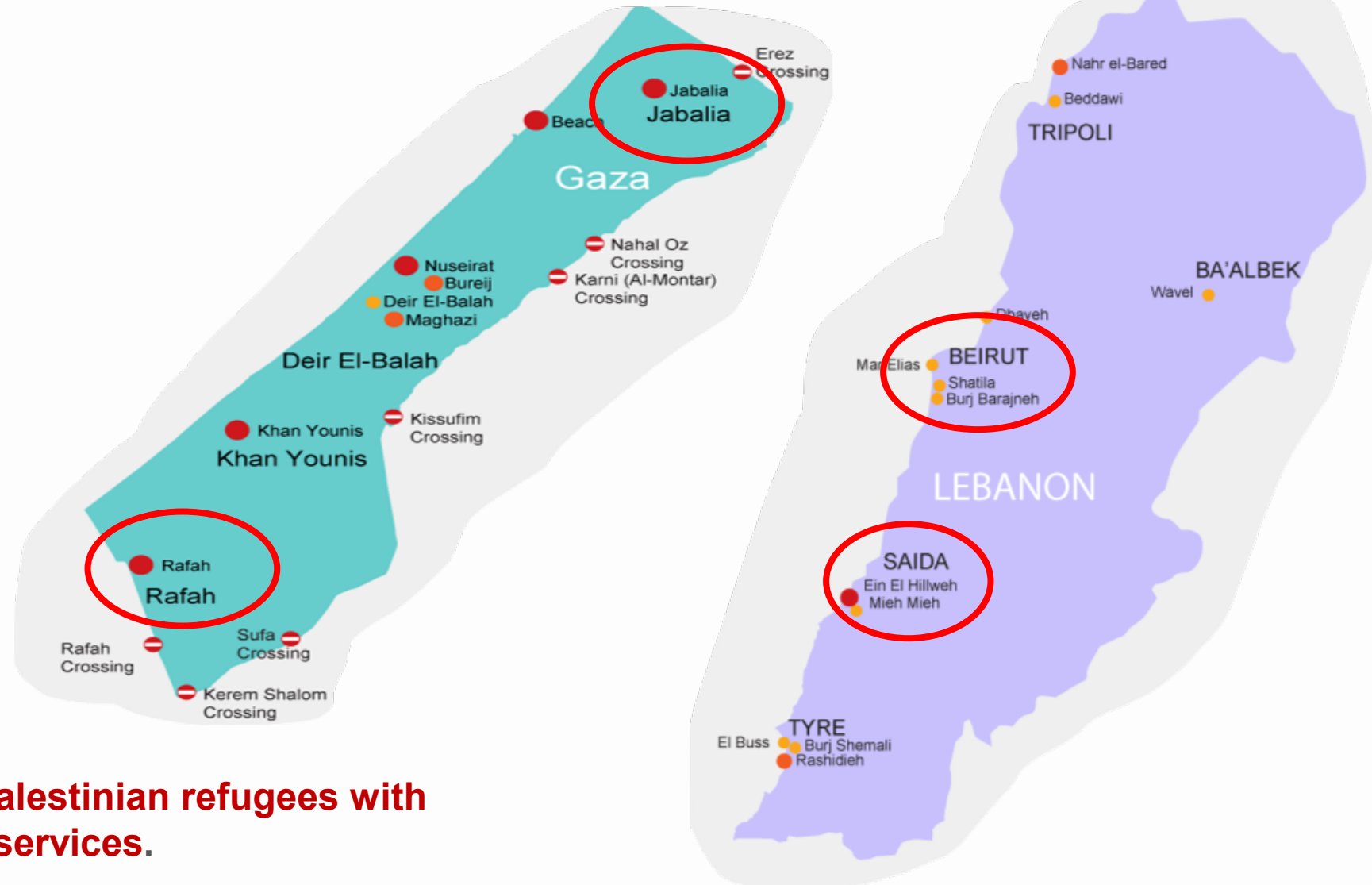
## UNRWA case study

**Aim:** to better understand what sustains health system resilience and to appraise how effective and equitable service delivery was during the COVID-19 period in Gaza and Lebanon using the example of the UNRWA health system in each setting

## Methods and settings

47 interviews with professionals at headquarter, field, area and clinic level.

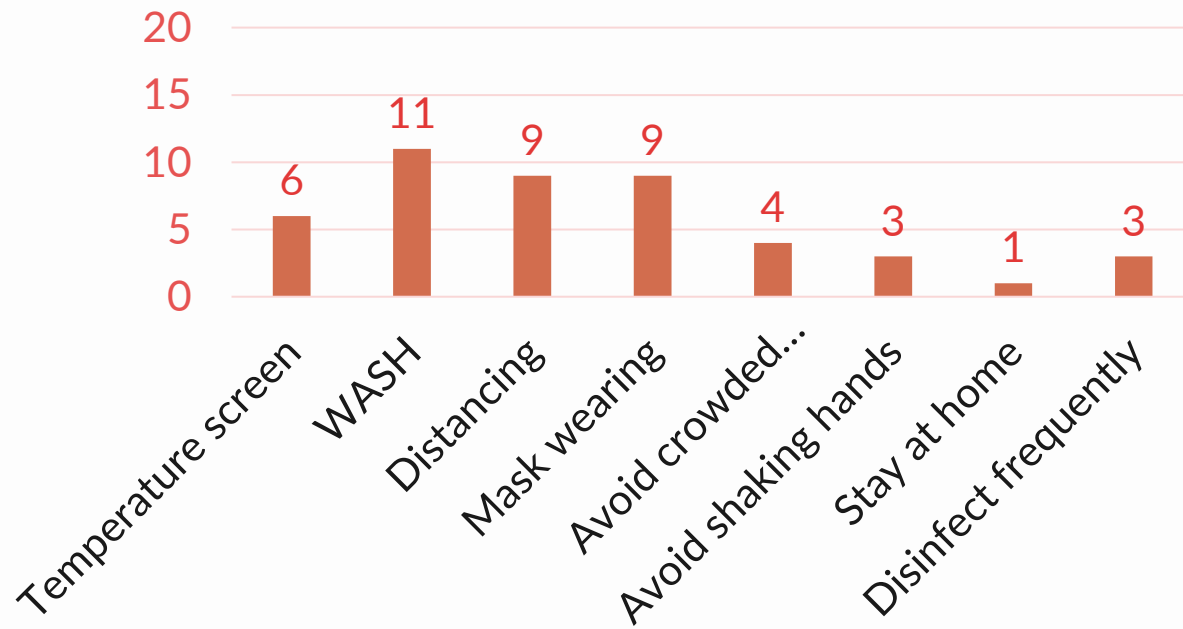
Monitoring of the response and routine care delivery context for UNRWA.



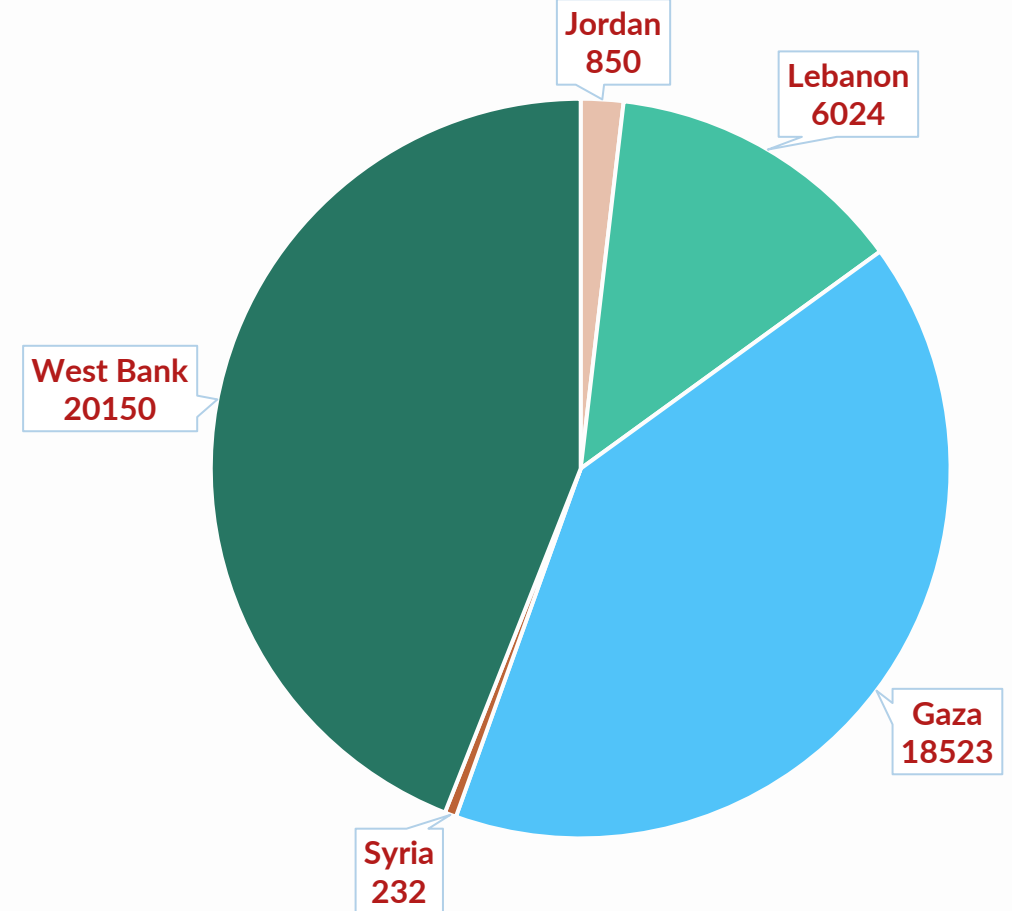
**UNRWA supports 5.7 million Palestinian refugees with primary health care and other services.**

# Context mapping and overview of COVID-19 situation in UNRWA settings (up to March 2021)

Public health recommendations (number of weeks issued)



Total COVID-19 cases among Palestine refugees



# A framework for understanding health system resilience

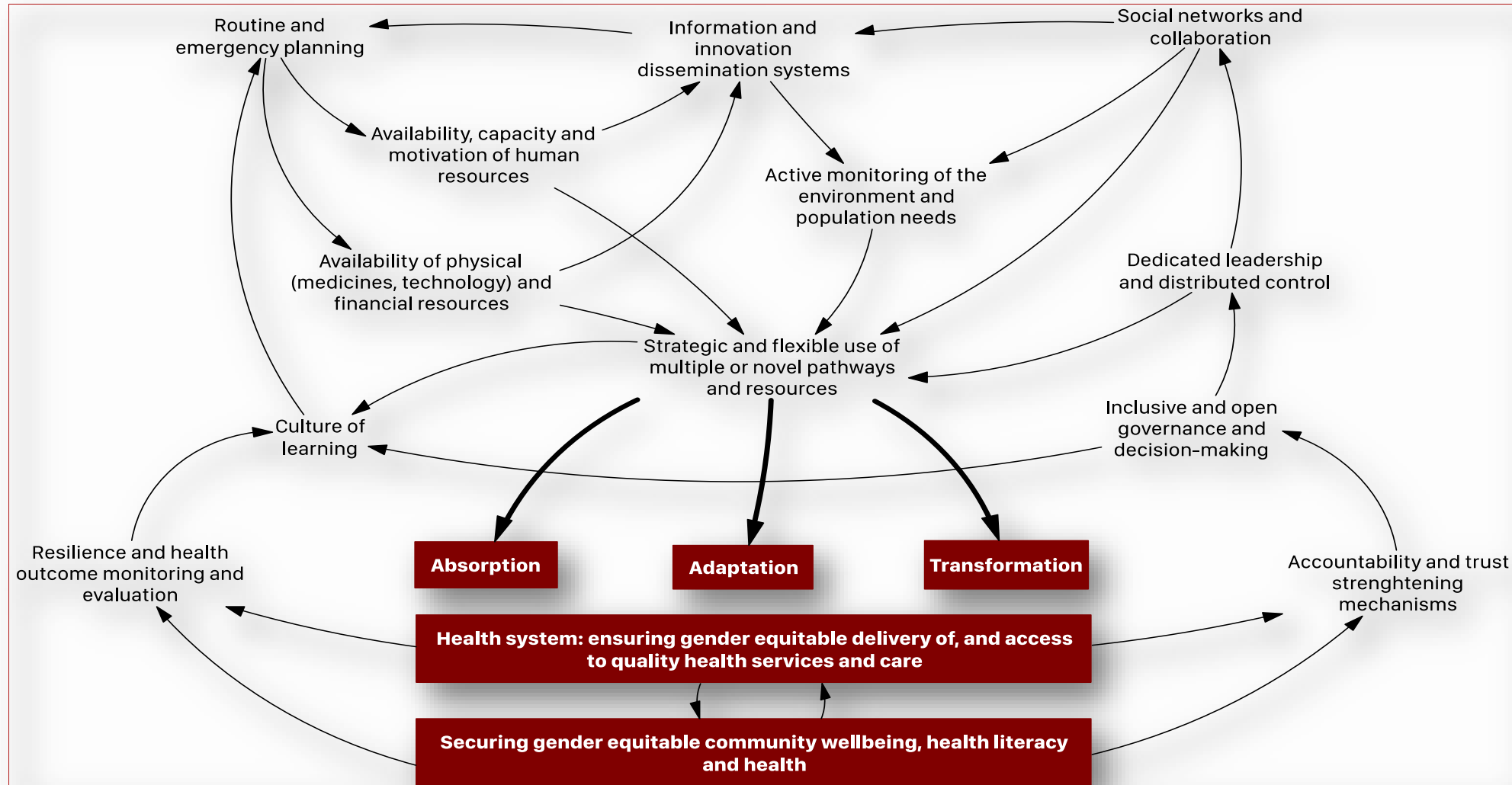
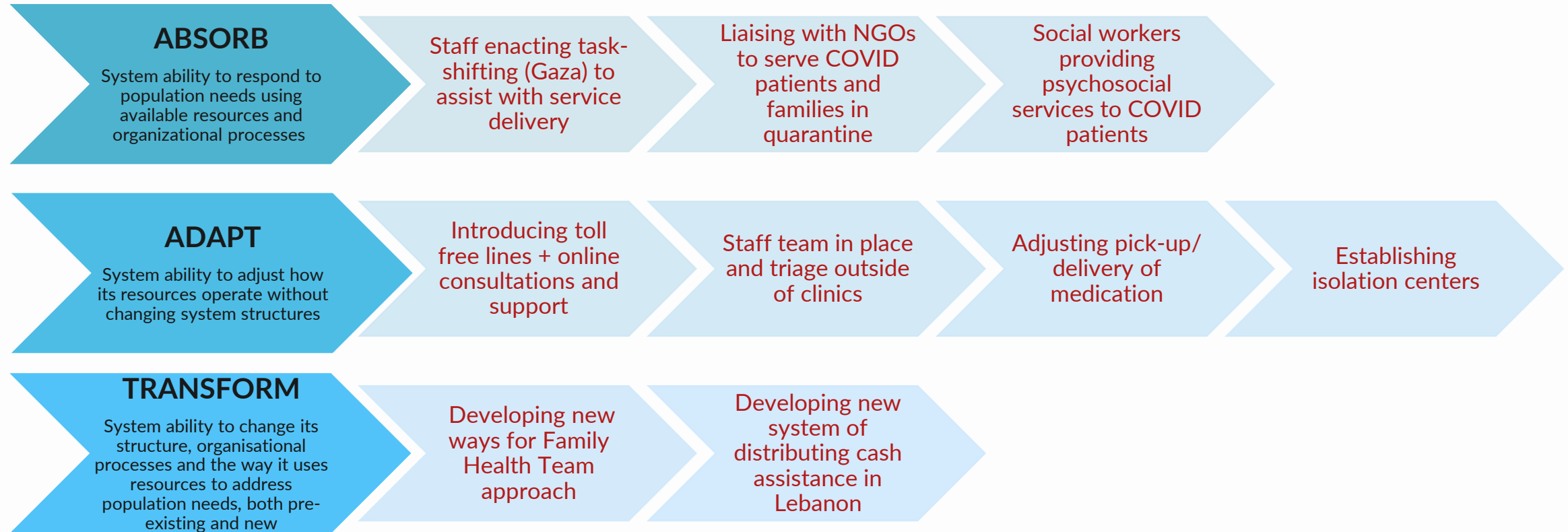
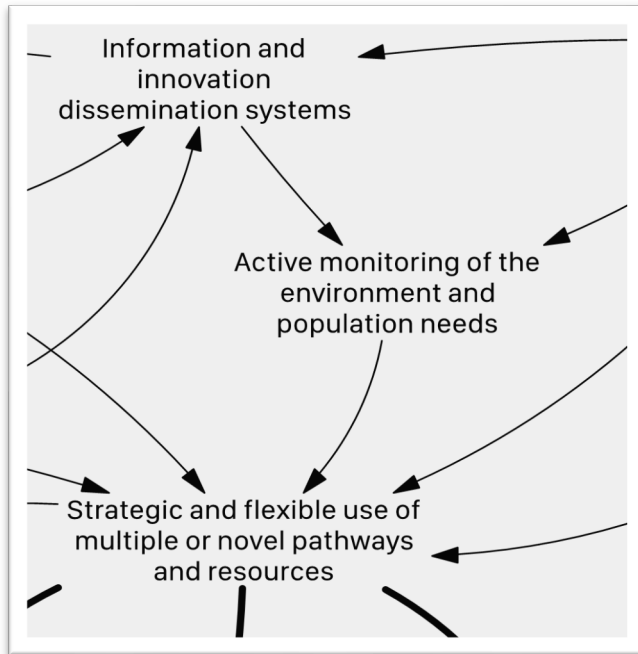


Figure: Resilience framework, ReBUILD for Resilience 2020

# Main resilience responses enacted in the health system

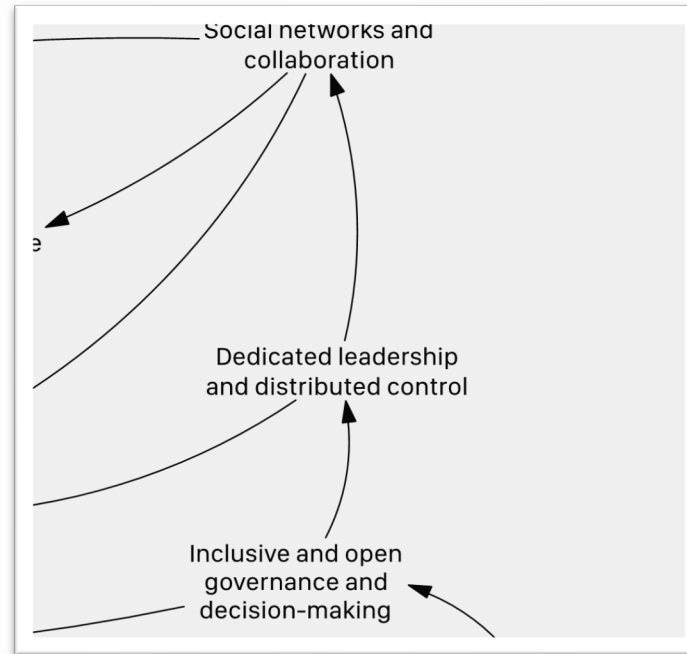


# Challenges and enablers of UNRWA health system resilience during COVID-19



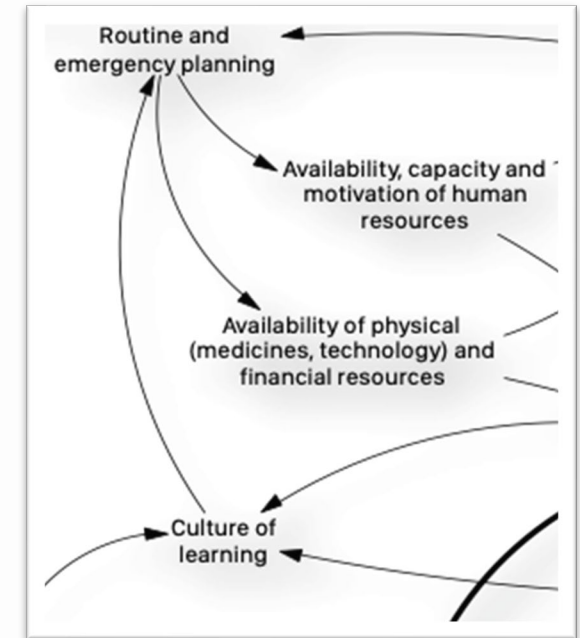
**Enabler:** information systems capturing needed information

**Example:** Hotline to listen to population's concerns, needs, receive feedback and modify the process



**Enabler:** Strong staff links, inclusivity and distributed control helps make informed quick decisions

**Example:** Views from area and field level rapidly inform decision-making (e.g. decision to repurpose school space into medical points)



**Challenge:** Reliance on donors and lack of compensation for additional risk

**Example:** Need to seek funding via flash appeals to support health staff

## Recommendations

- **Strengthen all the diverse underlying capacities** that sustain health system resilience
- **Collaborative structures and networks** which can implement, review and revise plans as necessary
- A **culture of learning**, rewarding employee **innovation in service delivery** and allowing **real-time adjustment of responses**
- Demonstrating **compassion** towards beneficiary populations, **providing services consistently** and **being responsive to community needs**



# Thank you

rebuildconsortium.com  
@ReBUILDRPC

[gloffreda@qmu.ac.uk](mailto:gloffreda@qmu.ac.uk)

## Presented on behalf of

Jamal Z<sup>1</sup>, Albaik S<sup>2</sup>, Horino M<sup>2</sup>, Ismail S<sup>2</sup>, Elkhatib Z<sup>2</sup>, Seita A<sup>2</sup>, Witter S<sup>1</sup>, Diaconu K<sup>1</sup>

1 Institute for Global Health and Development, Queen Margaret University, UK

2 United Nations Relief and Works Agency for Palestine Refugees in the Near East

This project was funded by



NIHR | National Institute  
for Health Research

